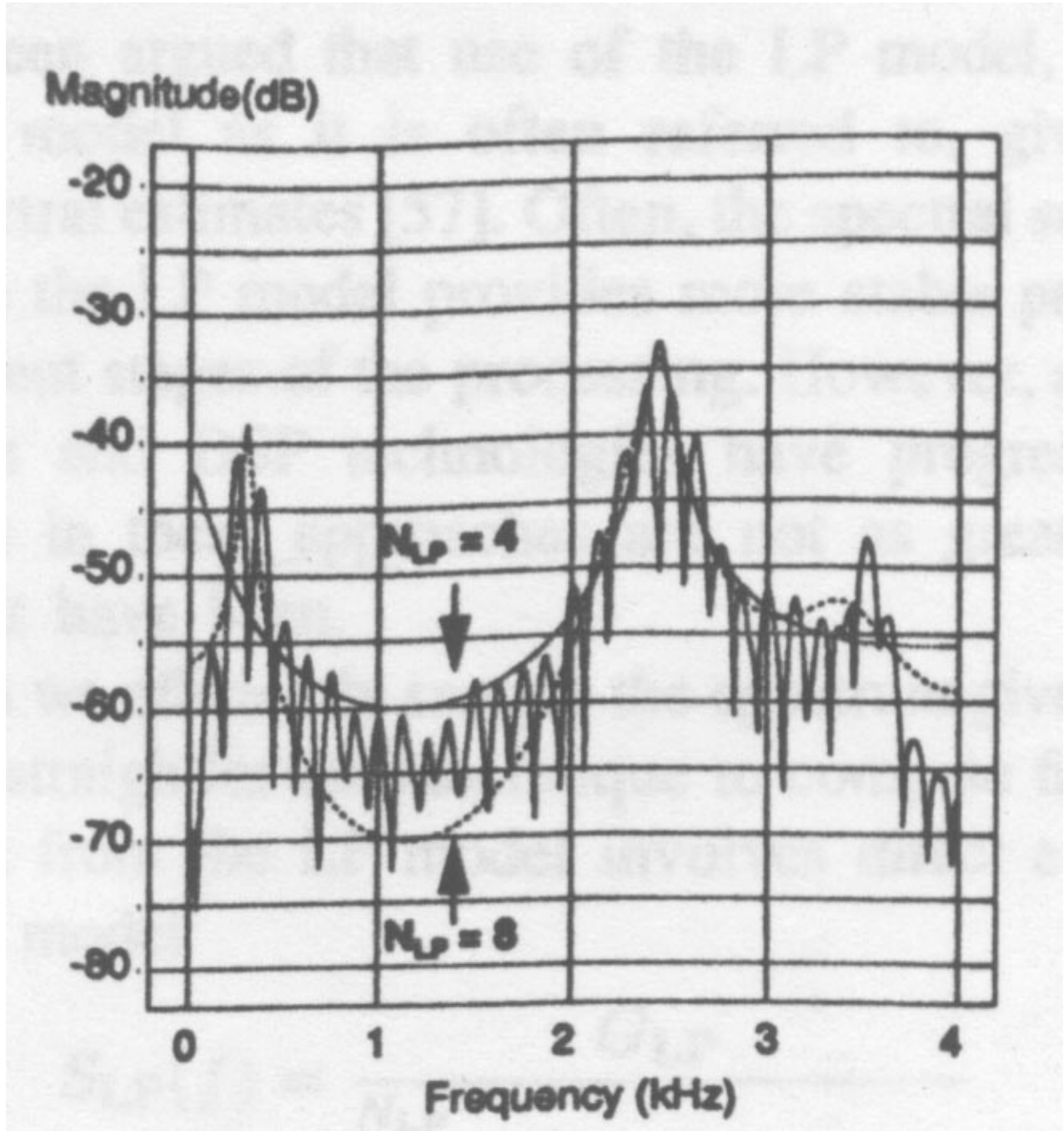
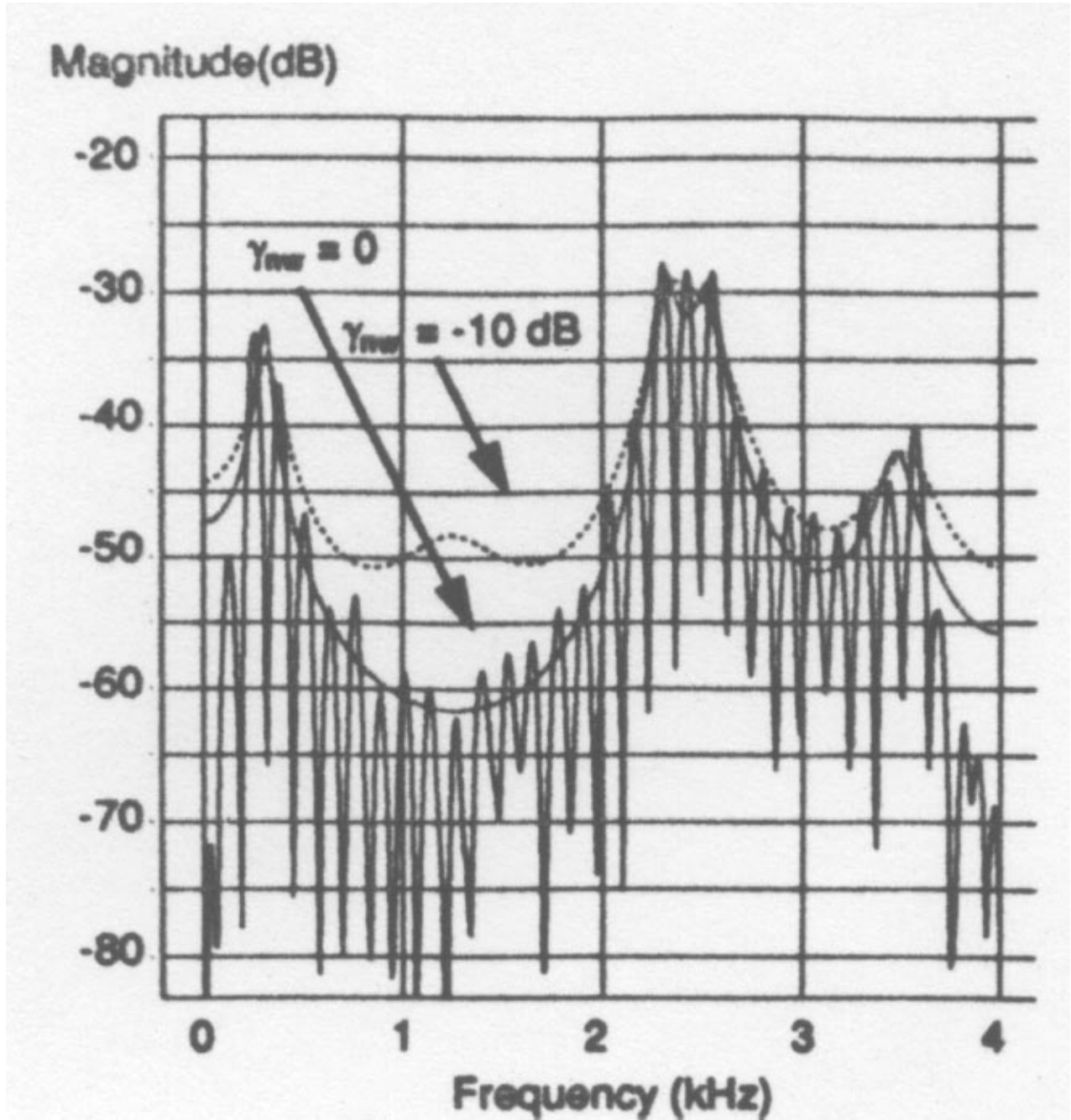


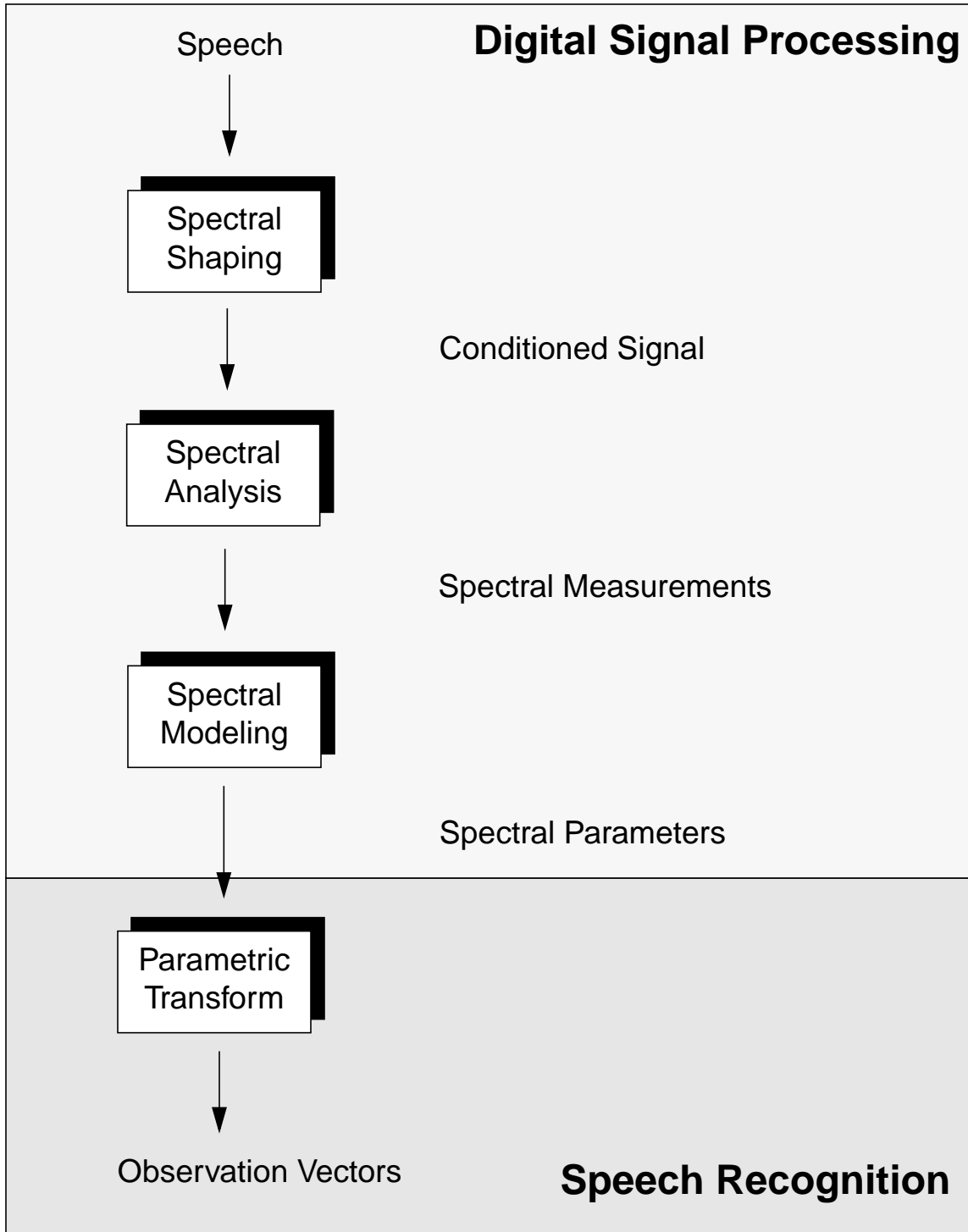
Spectral-Matching Interpretation of Linear Prediction



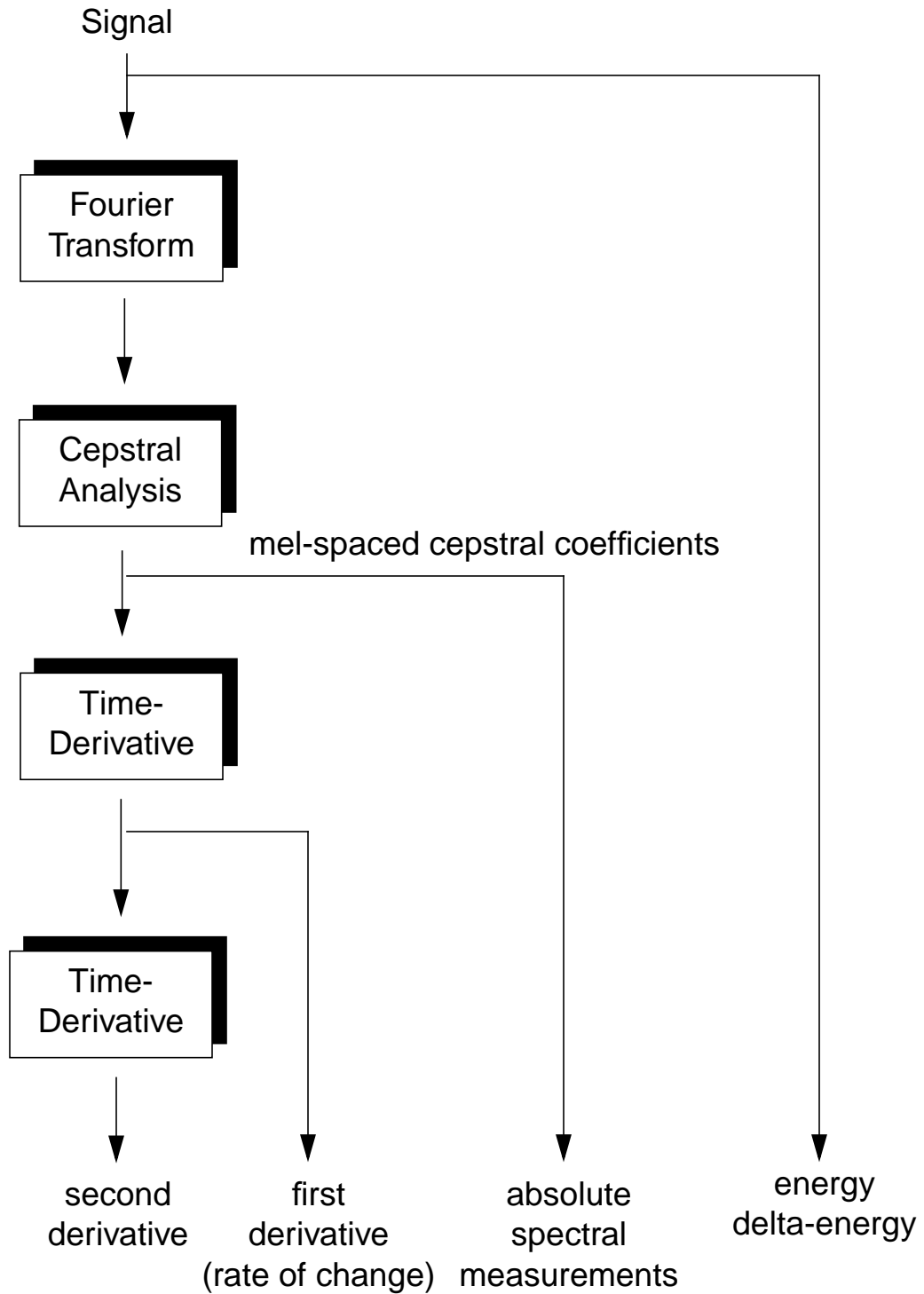
Noise-Weighting



THE SIGNAL MODEL (“FRONT-END”)



A TYPICAL "FRONT-END"



Putting It All Together

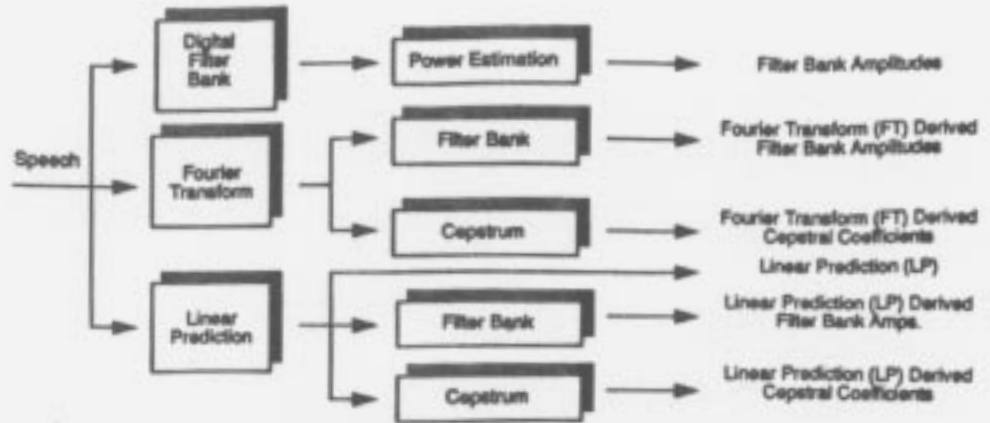


Fig. 8. The six major spectral analysis algorithms are shown. Cepstral parameters derived from either a Fourier transform or linear prediction model are by far the most popular of these approaches. The Fourier transform methods have traditionally been considered robust in severely noisy environments, and are popular for their similarity to the initial stages of the human auditory system.